

CAMPUS CONNECTIONS

EMPLOYEE NEWSLETTER

Issue 5

Vol 6

MAY 2026

WHAT'S INSIDE

2

COMMUNITY SHOWCASE

MISERICORDIA AT THE CAPITAL, SPECIAL OLYMPICS SPRING GAMES, THANK YOU, BACKSTAGE CREW, UPCOMING EVENTS

3

HIGHLIGHTS & OPPORTUNITIES

BUILDING THE FUTURE OF RESIDENT CARE WITH WELLSKY, SOCIAL SERVICE PRACTITIONERS CONFERENCE

4

EMPLOYEE RESOURCES

D&I QUARTERLY RESOURCE GUIDE, FROM INFECTION PREVENTION, ICEBREAKERS, ASL SIGN OF THE MONTH

5

FOR YOUR CONSIDERATION

LOCAL BUSINESSES, STAFF SPOTLIGHT, IT PAY TO READ CAMPUS CONNECTIONS

6-8

MONTHLY RECOGNITIONS

DEPARTMENT APPRECIATION, ANNIVERSARIES, WARM WELCOMES, MISERICORDIA'S GOT TALENT

MESSAGE FROM THE HEART

**HAPPY MOTHER'S DAY
TO ALL OF OUR
WONDERFUL MOTHERS
IN THE MISERICORDIA
COMMUNITY!**



Pictured: Misericordia staff and residents participating in various events this month (top row); the last two rows feature the Misericordia Annual Artist in All Fundraiser. Check out the official website [here](#).

WE APPRECIATE ALL THAT YOU DO

Dear Staff,

I want to thank each and everyone one of you for all we are doing collectively make a difference here at Misericordia. You continue to amaze me and I want to thank you for your commitment to our residents. As we approach the summer, I am also excited to share that the Misericordia Family Association came together at their event to raise funds for a special Holiday Appreciation Bonus which will be reflected in this week's pay cycle. We also added funds to the amount raised and the bonus will be distributed based on years of service that a staff has worked at Misericordia. [Click here](#) for the full chart detailing that process.

I would like to thank the Misericordia Family Association for their contributions toward this special Holiday Appreciation bonus. The MFA supports us in many ways for which we are deeply grateful. Please be advised that this Year's Paddle Raise will be focused on other fund raising focuses. Please know that we are doing our best to recognize the important contributions you make every day here at Misericordia. Thank you again for all you do all of us and the Misericordia Family Association.

—Fr. Jack Clair, President and Executive Director of Misericordia





COMMUNITY SHOWCASE

MISERICORDIA AT THE CAPITAL



Misericordia joined providers from across Illinois in Springfield for IARF Advocacy Day, a day focused on community providers of I/DD and behavioral health services advocating at the Capitol. Thanks to State Senator Julie Morrison, State Rep Mike Kelly and Representative Suzanne Ness for stopping by to speak with our resident and staff representatives.

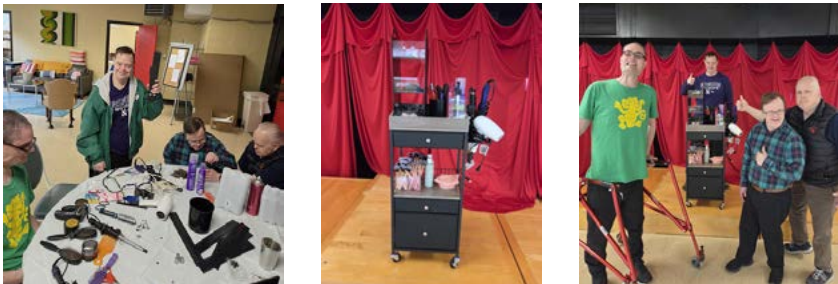
Pictured: Misericordia CDS staff (Nora T and Jason R) and residents at Springfield, Illinois for IARF Advocacy Day on 5/15.

SPECIAL OLYMPICS SPRING GAMES



Pictured: Misericordia staff and residents participating in Special Olympics earlier this month.

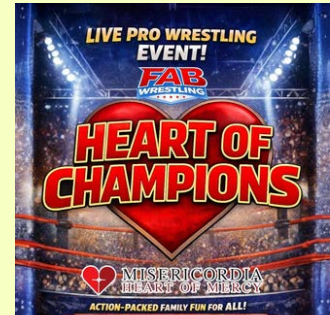
THANK YOU, BACKSTAGE CREW!



Pictured: Misericordia resident backstage crew helping to build the hair and makeup cart.

A Big Thank You to our Back Stage Crew for helping to build a Hair and Makeup Cart for our Performing Arts Department! Thanks, guys! It's going to keep us organized and looking good!

UPCOMING EVENTS



- **FAB WRESTLING PRESENTS: HEART OF CHAMPIONS (6/7)**
 - *Live Professional Wrestling Event*



- **VINTAGE SPORTS CAR SHOW (6/13)**



- **MANNY PETTY LIVE! (6/28)**
 - *featuring Lisa LoGrasso*

Check Campus Connections Weekly Updates and Mis Biz for ongoing resident and staff events happening throughout the month, and visit the [Misericordia Facebook](#) page for recaps.

CAMPUS CONNECTIONS



HIGHLIGHTS AND OPPORTUNITIES

BUILDING THE FUTURE OF RESIDENT CARE WITH WELLSKY



As previously reported, the design phase of the WellSky Resident Care System (RCS) has been underway for the past several months. In addition to mobilizing nineteen workstreams across different areas and departments, we would like to document some of the progress and expectations through show videos featuring your peers! So click the first of our series on the left, and stay tuned for more!

SOCIAL SERVICE PRACTITIONERS CONFERENCE



Back row L to R: Anginette Magitt (Mercy Glen), Chrissy Davis (Quinlan), Lloyd Iwueke (Village), Alecia Young (Mercy Glen), Jane Gaynor (Staff Development), Erica Lopez (RCH/McGowan), Joseph Watkins (DT), Laura Goschy-Kos (Staff Development); **Front row L to R:** Heather Mike (McAuley), Lance Sharp (CILA), Brigid Brennan (CDS), Jesenia Sanchez (Village), Leah Lehman (Rosemary Park)

Attending the Infnitec conference with the OJT team was an inspiring experience. It was encouraging to spend time around people who are passionate about the work they do. The sessions were filled with interesting information, ideas for activities, and gave me a sense of renewed energy. I particularly found the session on helping our residents age gracefully to be relevant to my job in Rosemary Park. There were many people from similar organizations, and it really reminded me of the importance of the overall mission of our work in the IDD community. I hope to pass along the information and stories from the conference, and the overall passion for the work, to the incoming DSPs in Rosemary Park. — **Leah L**, Rosemary Park OJT Area Trainer

WellSky Implementation

Target WellSky Implementation: Feb 2027
Report Date: May 2026

Misericordia is replacing Awards and moving to a new system called WellSky to help us give our residents the best care possible and make our daily work easier. Here is a quick update on our progress and what's happening next.

BUILD – We completed mapping out the initial design for our core clinical workflows and have started to build the system

MAJOR WINS

- ✓ Completed designing WellSky for our core clinical workflows to start building the system's skeleton
- ✓ Conducted a review of all the forms we're currently using to simplify our workflow


WHAT'S NEXT?

- ❑ Misericordia leaders will have a first look at the system & provide continuous feedback
- ❑ Start designing WellSky's scheduling system to have easier & more visible scheduling for residents
- ❑ Start designing parent portal module

WE WANT TO HEAR FROM YOU!

Your voice matters – As we continue to design & build WellSky, our top priority is making sure it works well for you.

Share your thoughts in our **3-minute survey** so we can better support you through the changes ahead.



Scan the QR code to access survey

Pictured: An infographic of our design progress taking place over the next several months. Feel free to submit your questions here or use the QR code above, and [click here](#) to enlarge the image.



EMPLOYEE RESOURCES

DIVERSITY & INCLUSION QUARTERLY RESOURCE GUIDE



Pictured: The KPOP trio known as Big Ocean. As shared in last month's Campus Connections, Big Ocean incorporates Korean and American Sign Language into their singing and dance routines. [Click here](#) to watch them perform "Glow."

[Click here](#) to check out Misericordia's Quarterly Diversity & Inclusion Resource Guide for staff. The content in this guide is gathered by members of the Diversity and Inclusion (D&I) Committee and/or submitted by staff and can be updated in real time as the quarter progresses and staff shares information with us.

To contribute to this resource, contact campusconnections@misericordia.com.



BREAK THE ICE WITH THESE CONVERSATION STARTERS WITH CO-WORKERS

Courtesy of [Atlassian.com](https://atlassian.com)



What's a vacation that you still think about?



Introvert or extrovert?



Early bird or night owl?

The Prevention Protocol

Dehydration

As the weather starts to warm up, we wanted to give a quick refresher on a dehydration! Dehydration happens when a person's body doesn't have enough fluids to function properly. If a person doesn't drink enough, or doesn't replace fluids they have lost, they can become dehydrated.

By a time someone feels thirsty, they are already dehydrated. Don't wait until someone says they are thirsty before encouraging them to drink.

What causes dehydration?

- Not drinking enough water or other fluids
- Vomiting or diarrhea
- Excessive sweating from high heat or exercise
- Loss of appetite or other stomach issues

Symptoms of dehydration

- Headache
- Nausea
- Confusion
- Dizziness
- Rapid Breathing
- Irregular or rapid Heartbeat

What can we do to prevent resident dehydration?

- Work in drink breaks into existing routines
- Drinking water is best, but almost any fluid can help with hydration
- Keep track of fluid intake as residents may not be able to track their own
- Consider barriers like difficulty swallowing or dependence on staff for hydration
- Set a good example for the residents by staying hydrated yourself!

[Click here](#) to read the full infographic about Dehydration, as part of our Prevention Protocol.

SIGN OF THE MONTH "WATER"



WATER

It's one of the first signs introduced to staff when starting at Misericordia: "Water." It's simply three fingers in the "W" handshape, wave near or tapping your mouth or chin.

With the weather getting hot, we encourage everyone to make use of this sign as much as you can!



FOR YOUR CONSIDERATION

LOCAL BUSINESSES FROM AROUND THE GLOBE

HERITAGE MUSEUM OF ASIAN ART

3500 S Morgan St, 3F, Chicago, IL, 60609
[details here](#)

ZEITLIN'S DELICATESSEN

2203 N Clybourn Ave, Chicago, IL
[details here](#)

CONFIDENCE APPAREL

600 E. Grand Ave, Chicago IL 60611
[details here](#)

SOUTH ASIA INSTITUTE

1925 S Michigan Ave, Chicago, IL 60616
[details here](#)

MANNA BAKEHOUSE

2944 W Devon Ave, Chicago, IL 60659
[details here](#)

BEACH YOGA CHICAGO

Montrose Beach, 200 W Montrose Harbor Dr, Chicago, IL 60640
[details here](#)

BA LE SANDWICHES

5014 N Broadway, Chicago, IL 60640
[details here](#)

Additionally, [click here](#) to check out this article from Choose Chicago for a recap of the different events and activities that happened in the city this past month of May!

Send us a tip! If you have recommendations for any local minority and women-owned businesses that Misericordia should know about it, [click here](#) and tell us about their goods and services. We may highlight your suggestion in future issues of Campus Connections!

JONATHAN C: A STAFF SPOTLIGHT



Pictured: Jonathan C. a Misericordia staff at Besser. Jonathan is a local singer-songwriter who cites Eminem as one of his lyrical influences over the years. Poetry and music have been Jonathan's creative outlets since he was a teenager.

Singer, songwriter, and rapper Jonathan C. believes his best work occurs when his pen lands on paper. For him, making music offers therapy, making his world easy to process. "Over the years, I've lost many friends and family members to illness, and I can now use music to talk to them as if they're still with me."

As a kid, Jonathan took to poetry and music, like both of his parents. Similarly, he and his wife, an award-winning singer-songwriter and longtime collaborator, continue to pass down music to their newborn. "I sing to my daughter before and after work," says Jonathan.

Jonathan, who has been releasing music since high school, describes his sound as a mix of "old soul and conscious rap with feel-good [instrumental] odes to hip-hop, rock, and indie." In addition to perfecting his sound, he says he has also started making music videos, particularly around the release of his debut album. His biggest inspirations include his faith and his family, and the most memorable moments connected to his artistry could be summed up by the people whose hearts his music touches. "I've met people at performances who have been inspired by my lyrics," says Jonathan. "Nowadays, music is healing."

IT PAYS TO READ CAMPUS CONNECTIONS

Congratulations to MARINA GALINDO, the winner of our latest ticket raffle! Marina will receive two tickets to attend the 66th Annual Misericordia Family Association Benefit at Soldier Field on June 25, 2026.

Special thank you to the MFA for this generous ticket donation.

As always, thank you to those who entered your names by reading about the raffles in Campus Connections. Be on the lookout for more opportunities to win big this month and onward. It pays to read Campus Connections!

CAMPUS CONNECTIONS

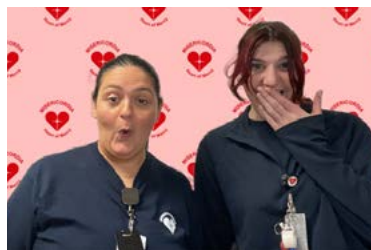


MONTHLY RECOGNITIONS

THANK YOU NURSES!

May follows another round of monthly appreciation for the various departments on campus. This month, we had a weeklong celebration for all of our nursing staff.

We thank them for all they do for the lives of our residents!



Pictured: Our Misericordia nurses from various areas (Main North, Main South, McAuley) participating in our special photobooth during Nurses Week.

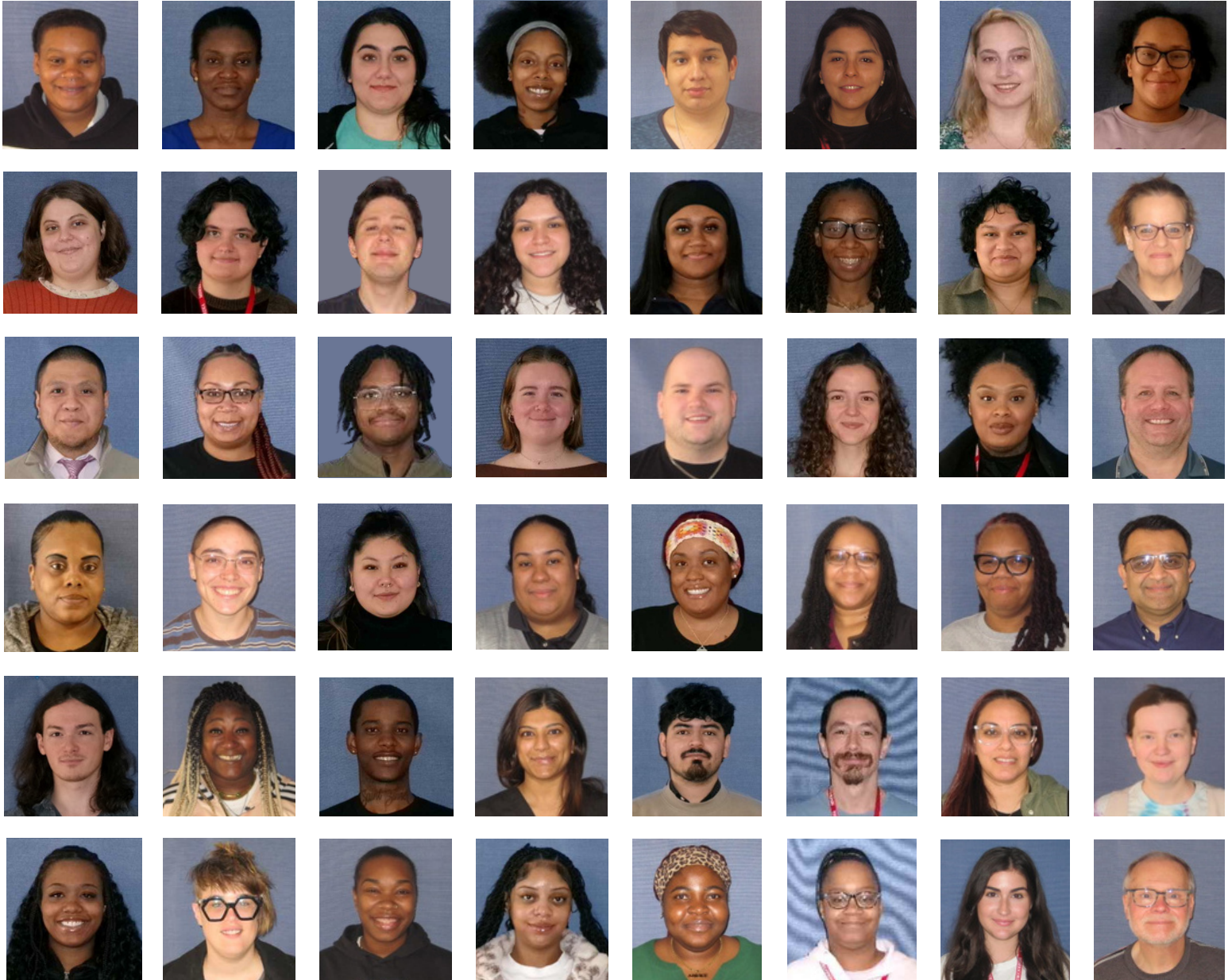
MAY ANNIVERSARIES

- 50 Vera Sanders
- 40 Deborah Satterfield
- 34 Kevin Connelly
- 32 Charles Carper, Janine Jacquet
- 31 Ariel Alvarado, Heather Mike, Nekisha Tolbert
- 30 Gwendolyn Arnold
- 29 Heather Barile, Esperanza Hernandez
- 28 Joan James-Walker
- 24 Sophia Alexander
- 23 John Tortorello
- 22 Emad Garibovic
- 21 Nellie Guerrero, Jason Goldberg
- 20 Denise Davis
- 19 Anne Maddock, Lynise Williford
- 18 Cherie Churan, Migdalia Ortiz, Debra Wright
- 17 Alfredo Barrientos, Dorothy Finnegan, Kathleen Watts, Justyna Madura
- 15 Sarah Burlingham, Thomas Harris, Nora Turgeon, Kelli Wilson
- 14 Wendy Gee, Meghan Gerage, Alice Ighodaye
- 13 Sandy Terrell
- 12 Vicki Williams Johnson
- 11 Melissa Barron, Tania Bridge, Carolyn Sang, Erika Nava, Erin Clark, Katrina Semelroth
- 10 Maricela Guzman, Ricardo Bobadilla, Skye Dent, Elizabeth Dick, Kevin Markham, Erin Stewart
- 9 Bettina Hutchens, Ashleah Martin, Barbara Moerman, Jorge Rendon Cruz
- 8 Richard Martel
- 7 Allyson Byrne, Judy Wolf, Ariana Vargas Solis, Maria Vazquez-Benitez
- 6 Jessica Diaz, Meliha Malagic
- 5 Katie Nguyen, Brigid Brennan, Sade Carter, Shanqwanta Horne, Grace Kariza, Jennilyn Layag, Stephanie Lopez, Maria Urrutia Valente, Caitlinn Caddick
- 4 Raejaena Dowdy, Mary Burkes, Rajendra Patel, Chelsea Cade, Mantoya Chambers, Bernadette Lettner, Rachel McNutt, Francisco Silva
- 3 Sylvia Carrillo, LJ Grove, Judas Almodovar, Harrison Clark, Vanessa Diaz-Perez, Victor Guzman, Latoya Newman, Sofia Trejo
- 2 Samuel Ferrara, Soleil Nyagicumbi, Djordje Velijkovic, Danaysha Gant, Lauren OKane, Melanie Salgado, Tess Vega, Mary Grace Kapraun, Julian Oribello, Virginia Susa
- 1 Juliana Balleza Gonzalez, Demetrius Cobb, Ezequiel Ledezma Carrera, Latifu Oshodi, Jocelyn Carranza, Charles Copeland, Emma Corbett, Alexandra Detzner, Jason Drucker, Finn Eaker, Angel Jackson, Elizabeth Kwarteng, Jazmin Malinowski, Declan McDermott, Jeffrey O'Malley, Michelle Orosz, Tatiana Russell, Lely Sanchez Paredes, Marlene Shunnarah, Monica Vargas, Aluna Yang



MONTHLY RECOGNITIONS (CONT'D)

WELCOME NEW STAFF



Albert, Jasmine (Quinlan); **Amusah, Rafiat** (Main Nursing); **Aranda, Audriana** (McAuley); **Brunner, Nakya** (McAuley); **Castillo, Santiago** (Rosemary Park) **Catano-Bedoya, Lina** (Rosemary Connelly); **Chaltin, Amelia** (Rosemary Park); **Davis, Gwendolyn** (McAuley); **Dillett, Erin** (Marian Center); **Dvoracek, Olivia** (Connelly); **Ford, George** (Quinlan); **Garcia Mendiola, Esmeralda** (Village); **Harris, Maya** (Village); **Jones, Justice** (Rosemary Park); **Kant, Kiana** (Quinlan); **Khan, Adam** (Rosemary Park Nursing); **Knee, Samantha** (Marian Center); **Laus, Michael** (Rosemary Park); **Martin, Jasmine** (Rosemary Park); **McClinton, Jonathan** (Village); **Mohn, Annabelle** (DT); **Moore, Jacob** (Village); **Moran, Kate** (Therapy); **Murry, Monica** (McAuley); **Nelson, Timothy** (Marian Center); **Norsworthy, Denzell** (Village); **Orion, Avery** (Village); **Schuettpelz, Sarasa** (Marian Center); **Solis, Cynthia** (Rosemary Park); **White, Tanesha** (Quinlan); **Lee, Mamie** (McAuley); **Nickelson, Michele** (Village); **Shah, Shalin** (Human Resources); **Grant, Max** (Hearts and Flour Bakery); **Gunn, Tina** (Security); **Ali, Prince** (Mercy Glen); **Amir, Urooba** (Rosemary Park Nursing); **Clara, Adrian** (Mercy Glen); **Colon, Janet** (Rosemary Park); **Diago, Chris** (Village); **Dix, Justine** (Village); **Holmes, Vanyce** (Rosemary Connelly); **Loeber, Katherine** (Village); **Matthews-Bailey, Tatiana** (Rosemary Park); **Muhammad, Shahzaade** (McAuley); **Odunewu, Maryam** (McAuley); **Sweezer, Shenika** (Village); **Vance, Lauren** (McAuley); **Sapinski, David** (Social Services)

CAMPUS CONNECTIONS



MONTHLY RECOGNITIONS (CONT'D)

WELCOME NEW RESIDENTS



Molly

Residence: McAuley

- Enjoys swimming
- Enjoys doing crafts and baking
- Big Swiftie



Thomas

Residence: Shannon Apts

- Loves to listen to music and audiobooks
- Enjoys taking walks



Lindsey

Residence: Shannon Apts

- Likes to read
- Like doing crafts
- Enjoys jigsaw puzzles



Meghan

Residence: Rosemary Park

- Loves to go swimming
- Loves going to the library
- Loves doing puzzles



Robert

Residence: Marian Center

- Enjoys going to church
- Enjoys riding his bike and playing videogames



Brett

Residence: Connelly Home

- Loves being around people
- Likes swimming
- Likes going to church



Marty

Residence: CILA

- Likes to recycle metal
- Enjoys bike rides
- Enjoys fishing

CONGRATULATIONS ON YOUR RETIREMENT, BRIAN AND GEORGE!



Both Brian and George have worked at Misericordia for over a decade, and this May marks their retirement. With hopes traveling across the world, we wish them a retirement full of both relaxation and excitement.

We thank them for their years of service!

"We've enjoyed the many years we got to spend with Misericordia residents, and we're looking forward to this new adventure!"

- Brian H (DT)



Stay tuned for weekly Campus Connections updates sent via email. If you have any questions or feedback for us, send your messages [here](#)! Be sure to include your name, work area, and an email we can use to contact you!

Remember to use caution when opening and responding to emails. Every day, more than 3 billion phishing emails are sent out worldwide. These emails are tactics used by scammers to trick you into giving up sensitive information. [Click here](#) to find eight tips on how to avoid email phishing scams.

CALL FOR SUBMISSIONS

HAVE A TALENT THAT YOU WOULD LIKE FOR US TO SHOWCASE?

[CLICK HERE](#) TO SHARE YOUR SUBMISSION AND WE MAY PUBLISH IT FUTURE CAMPUS CONNECTIONS